

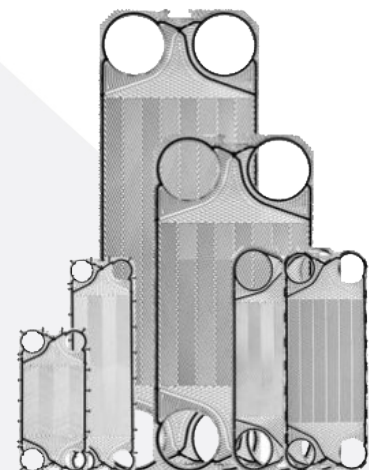
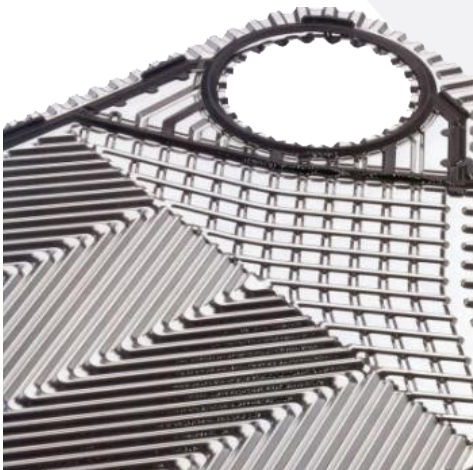
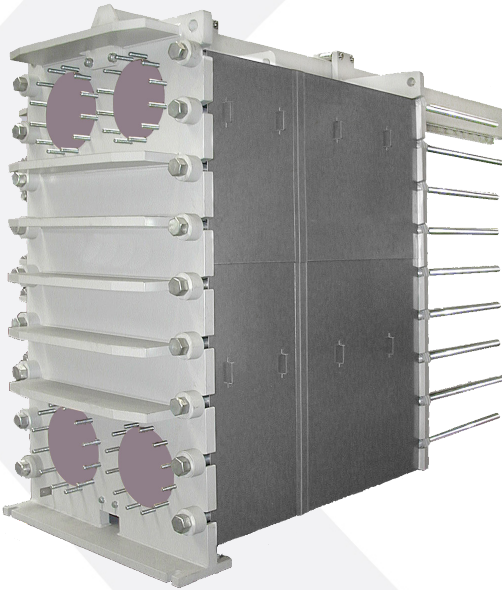
PLATES AND GASKETS HEAT EXCHANGER

Performance and modularity

- Compactness
- Flexible and expandable
- High thermal performances
- Big size available
- Easy repairing / maintenance
- Good price / performance ratio
- Full acces on plates

Conception and manufacturing

- Thermal design :
PHE DESIGNER
- Mechanical design :
ASME VIII
- Drawing software :
AUTOCAD



Several type of technology available :

Corrugated plates :

- 2 corrugation angles
- Good efficiency and pressure resistance
- For clean fluids applications
- Wide gap possible on request



Semi-welded plates :

- Laser-welded pairs of plates
- For dangerous fluids not compatible with elastomer gaskets



Selection criteria :

Plate range : 0.04m² to 3m²

Nozzle diameter : DN 25 to DN 500

Using conditions : max. pressure 25 bars / max. temperature 180°C

Material : AISI 304, 316, 254 SMO, Hastelloy, Titanium

Mechanical design : ASME VIII

Certification ISO 9001, PED 2014/68/UE, SQLO, TÜV agreement

Pharmaceutical and Food applications : stainless steel frame, adjustable feet, SMS connections