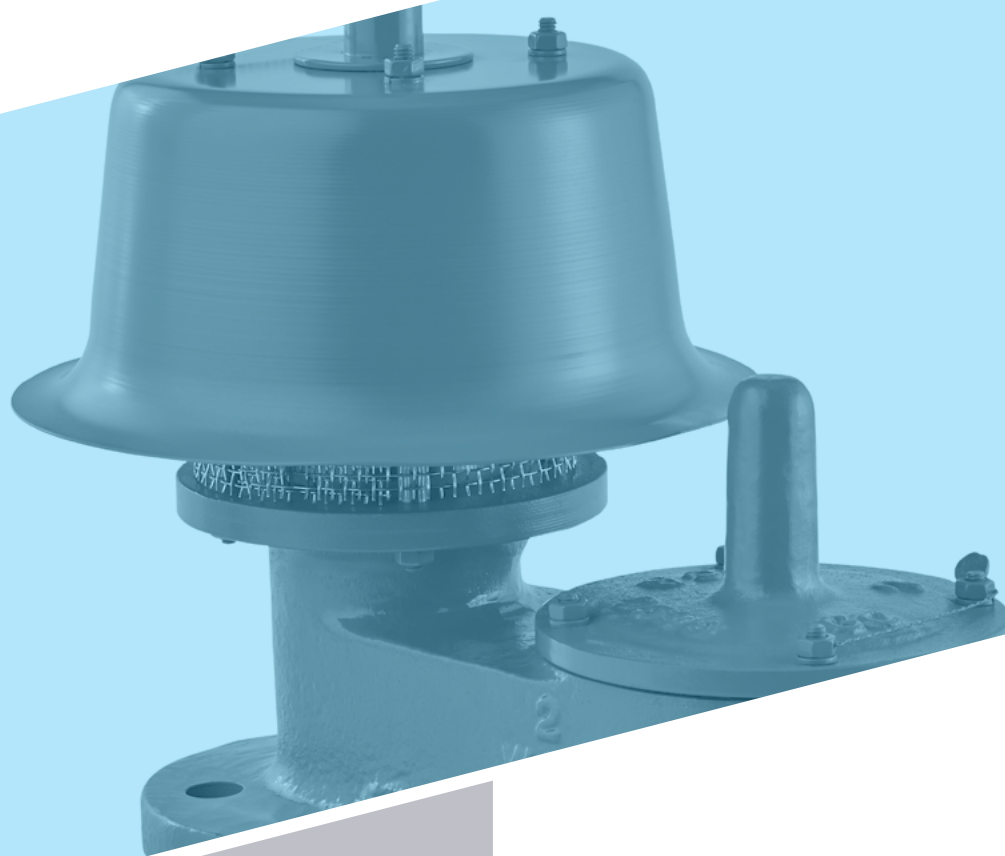




# **PRESSURE/VACUUM RELIEF VALVES**

1200 SERIES



# 1200 SERIES

The Groth 1200 Series Pressure/Vacuum Relief Valves are designed to protect your tank from damage created by overpressure or excessive vacuum. Costly product evaporation losses due to normal tank “breathing” are greatly reduced. Because the 1200 Series products retain toxic vapors, atmospheric contamination is minimized which helps to provide increased fire protection and safety.

## Technical Details

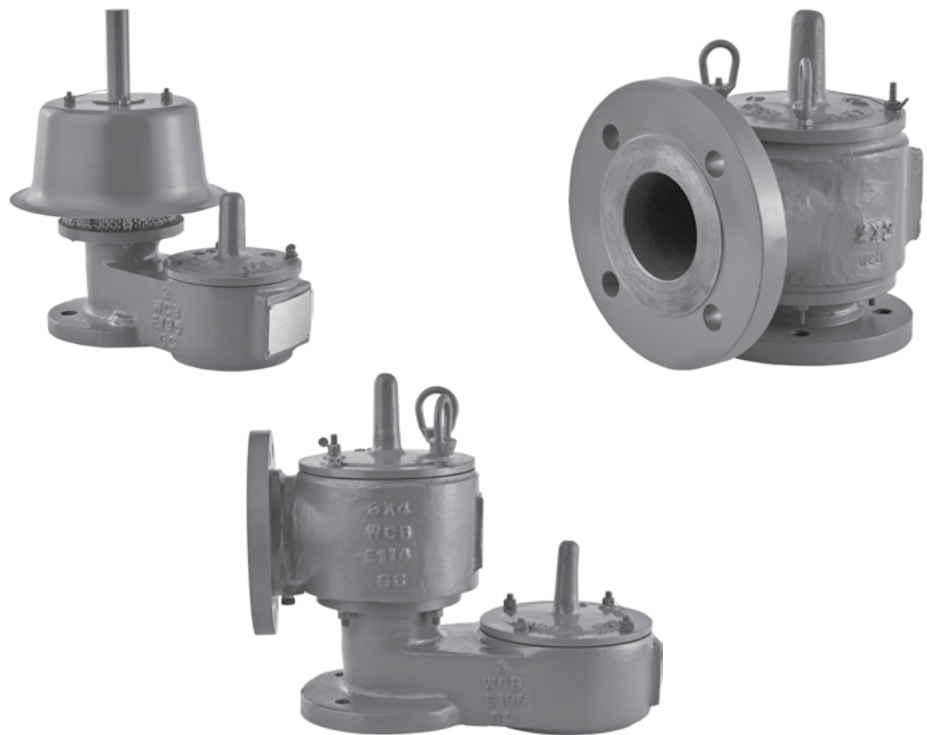
- Sizes: 2” (DN 50) through 12” (DN 300)
- Pressure Settings: 0.5 oz/in<sup>2</sup> to 15 psig (2.15 mbarg to 1.03 barg)
- Vacuum Settings: 0.5 oz/in<sup>2</sup> to 12 psig (2.15 mbarg to 506 mbarg)
- Material: Aluminum, Carbon Steel, Stainless Steel, Fiberglass, special materials available upon request

## Features

- Modular Construction
- Cushioned air seating
- Superior performing fluoropolymer diaphragms
- Self draining housing body and drip rings
- Peripheral Guiding and center stabilizing system for alignment
- PED and ATEX Certified

## Options

- Buna-N, FKM
- Steam Jacket Valve



[GROTHCORP.COM](http://GROTHCORP.COM)